

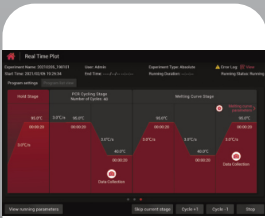
Convergys[®] qPCR

Quantitative real-time PCR

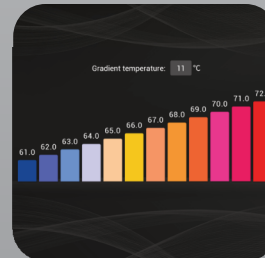
The Convergys[®] qPCR is a real-time PCR device suitable for quantitative fluorescence detection with excellent sensitivity. The device contains six detection channels, from which you can choose up to four for simultaneous detection in a single reaction. Precise temperature control ensures excellent control and reproducibility. You can select reaction temperatures between 5°C and 105°C. Temperature gradients can be set between 30°C and 100°C with a range difference of up to 40°C. The device capacity comprises 96 reaction tube positions, suitable for common PCR reaction vessels like 96 well plates and single or strip PCR tubes. The device is operated via its integral touch screen interface, or by a connected PC with dedicated software. The system features easy and convenient setup, preset programs and comprehensive analysis functions.



- **Quantitative real-time PCR**
- **High sensitivity fluorescence detection**
- **6 Fluorescence channels**
- **Simultaneous detection of 4 fluorophores per reaction**
- **96 well capacity**
- **Temperature gradient (40°C difference range)**
- **Precise temperature control**
- **Touch screen user interface**
- **Optional PC software**



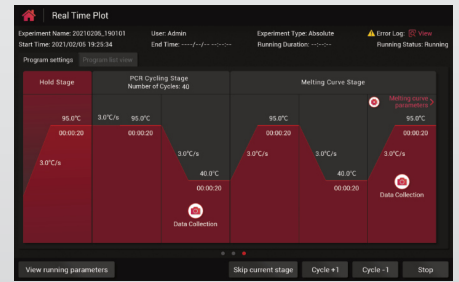
High-precision temperature control ensures a block temperature resolution of 0.1°C and temperature uniformity of 0.1°C



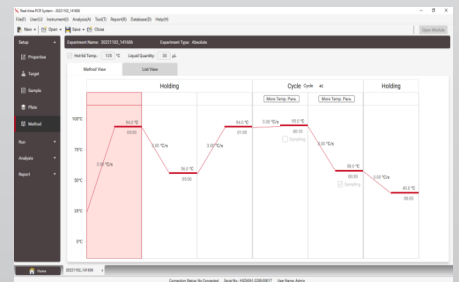
Gradient temperature control range 30-100°C, maximum temperature difference 40°C

Specifications of Convergy's® qPCR

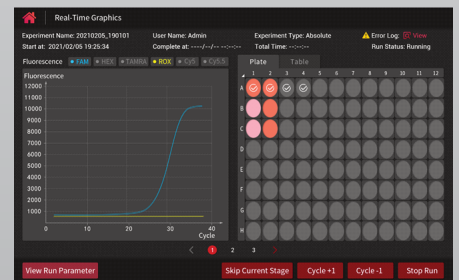
Capacity:	96 wells (12 x 8)
Applicable consumables:	0.1 mL, 0.2 mL PCR single tube, strip tube, 96 well plate (flat plate, half-skirted plate)
Detection location:	Top detection
Excitation light wavelength:	400-800nm
Detection wavelength:	500-800nm
Multiple detection:	Simultaneous detection of up to 4 fluorescence channels in a single tube
Fluorescence intensity detection repeatability:	CV ≤ 3%
Sample repeatability:	CV of Ct value ≤ 3%
Fluorochrome/Dye (Channel 1):	FAM, SYBR Green I
Fluorochrome/Dye (Channel 2):	JOE, HEX, TET, VIC
Fluorochrome/Dye (Channel 3):	TAMRA, Cy3, NED
Fluorochrome/Dye (Channel 4):	ROX, Texas Red
Fluorochrome/Dye (Channel 5):	Cy5
Fluorochrome/Dye (Channel 6):	Cy5.5
Excitation light source:	full-spectrum LED
Detector:	PMT
Block temperature range:	4 - 105°C
Max block heating & cooling rate:	6°C/s
Block temperature accuracy:	≤ 0.1°C
Block temperature precision:	≤ 0.1°C
Block temperature uniformity:	± 0.1°C
Block gradient temperature range:	30 - 100°C
Gradient temperature difference:	1 - 40°C
Heated lid temperature range:	30 - 110°C (default 105°C)
Module temperature control mode:	Block mode, analog tube mode
Sample volume range:	10-100 µl
Scan mode:	Full plate scan or specified line scan
Software functions:	Absolute quantification, relative quantification, standard melting curve, SNP genotyping, melting curve genotyping, isothermal amplification, etc.
Operation interface:	10-inch touch screen UI and PC software, dual operation modes
Ports:	USB Type-A port × 2, USB Type-B port, RJ45 Ethernet port
Power supply:	100-240 V~, 50/60 Hz, 1000 W
Dimensions:	320 mm x 525 mm x 420 mm
Weight:	27 kg



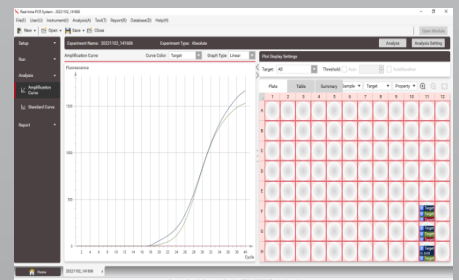
Device UI: Program setting interface



PC Software: Program setting interface



Device UI: Fluorescence curve interface



PC Software: Fluorescence curve interface

Ordering Information

REF	Article Name	Description
1100-5401	Convergy's® qPCR	Quantitative real-time PCR device

Convergent Technologies GmbH & Co. KG
 Ringstr. 14, 35091 Coelbe, Germany
 Tel: +49 6421 8869948 | Fax: +49 6421 8869958
 Homepage: www.convergent-technologies.de
 e-mail: info@convergent-technologies.de

